

Performance

| | |
|------------------------------------|-----------|
| Lifting height — on tyres | 7505.0 mm |
| Rated capacity | 4300 kg |
| Capacity (at max. height on tyres) | 1800 kg |
| Capacity (at max. reach on tyres) | 1600 kg |
| Max. reach on tyres | 4022.0 mm |

Weights

| | |
|------------------|---------|
| Weight (unladen) | 8040 kg |
|------------------|---------|

Traction

| | |
|-----------------------|--------------------|
| Standard tyres | Alliance 460/70R24 |
| 1st gear / low range | 6.0 km/h |
| 1st gear / high range | 12.0 km/h |
| 2nd gear / low range | 18.0 km/h |
| 2nd gear / high range | 40.0 km/h |

Drive System

| | |
|--------------|--|
| Transmission | Hydrostatic with electronic regulation |
| Main drive | Hydrostatic motor + 2 speed gearbox |

Engine

| | |
|--|------------|
| Make / Model | Bobcat D34 |
| Fuel | Diesel |
| Cooling | Coolant |
| Rated power (ISO 14396:2002) at 2200 RPM | 130.0 HP |
| Rated power (ISO 14396:2002) at 2200 RPM | 97.0 kW |
| Maximum torque at 1400 RPM | 500.0 Nm |
| Number of cylinders | 4 |
| Displacement | 3.40 L |

Hydraulic System

| | |
|-------------------------------|---|
| Pump type | LS piston pump with electric displacement limiter |
| Pump capacity | 190.00 L/min |
| Relief valve pressure setting | 255.00 bar |

Cycle Times

| | |
|---|-------|
| Lift time - no load | 6.5 s |
| Lower time - no load | 5.0 s |
| Telescope in time at max. reach - no load | 5.0 s |
| Telescope in time at max. height - no load | 5.0 s |
| Telescope out time at max. reach - no load | 4.5 s |
| Telescope out time at max. height - no load | 4.3 s |

Brakes

| | |
|-----------------------------|---------------|
| Engine braking | Hydrostatic |
| Parking and emergency brake | Passive brake |

Fluid Capacities

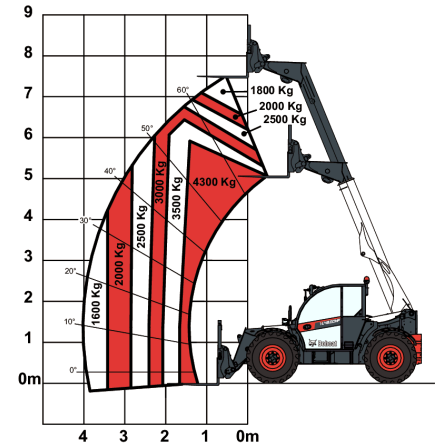
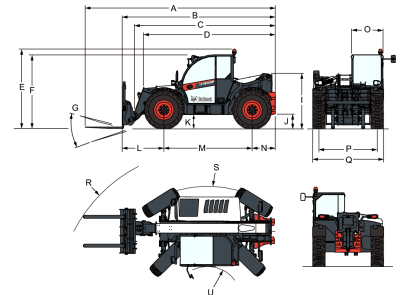
| | |
|---------------------|----------|
| Fuel tank | 138.00 L |
| Hydraulic reservoir | 59.00 L |

Environmental

| | |
|---------------------------------------|-----------------------|
| Operator noise level (LpA) (EN 12053) | 73 dB(A) |
| Level of acoustic power (LWA) | 107 dB(A) |
| Whole body vibration (EN 13059) | 1.10 ms ⁻² |

Load Charts

With forks on 24 inch tyres


Dimensions


| | |
|---------------|---------------|
| (-) 900.0 mm | (L) 1352.0 mm |
| (A) 6180.0 mm | (M) 2870.0 mm |
| (B) 4975.0 mm | (N) 754.0 mm |
| (C) 4585.0 mm | (O) 1013.0 mm |
| (D) 4256.0 mm | (P) 1895.0 mm |
| (E) 2561.0 mm | (Q) 2300.0 mm |
| (F) 2374.0 mm | (R) 4883.0 mm |
| (G) 152.0° | (S) 4962.0 mm |
| (I) 1770.0 mm | (T) 3714.0 mm |
| (J) 430.0 mm | (U) 1092.0 mm |